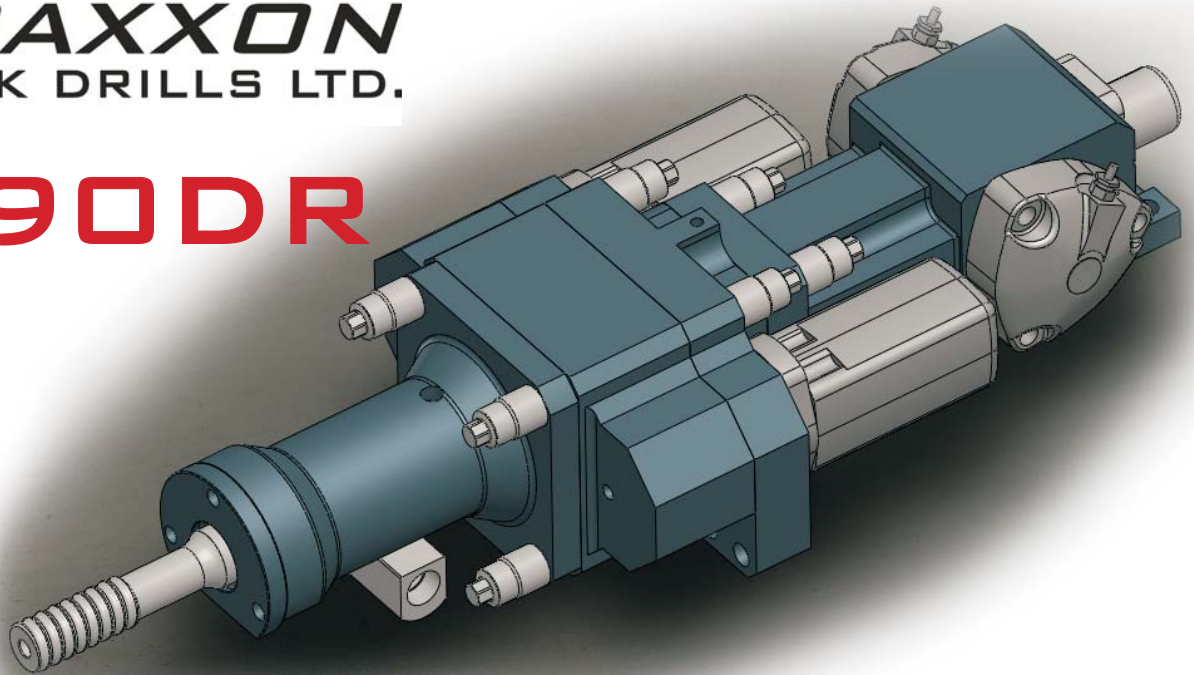




TRAXXON
ROCK DRILLS LTD.

TX590DR



Features / Benefits:

- Separate and easily removable flushing swivel allows the use of high pressure air, grout, water and eliminates the possibility of back-flushing contaminants into the hammer body.
- Built in swivel shortens the drill string, as compared to separate drill and swivel designs.
- Sealed and grease lubricated rotation housing.
- Dual and opposed rotation motors for efficient Hi-torque operation.



MODEL: TX590DR

DRILL ROD DIAMETERS: 30 - 55mm

PERCUSSION RATE: 60Hz

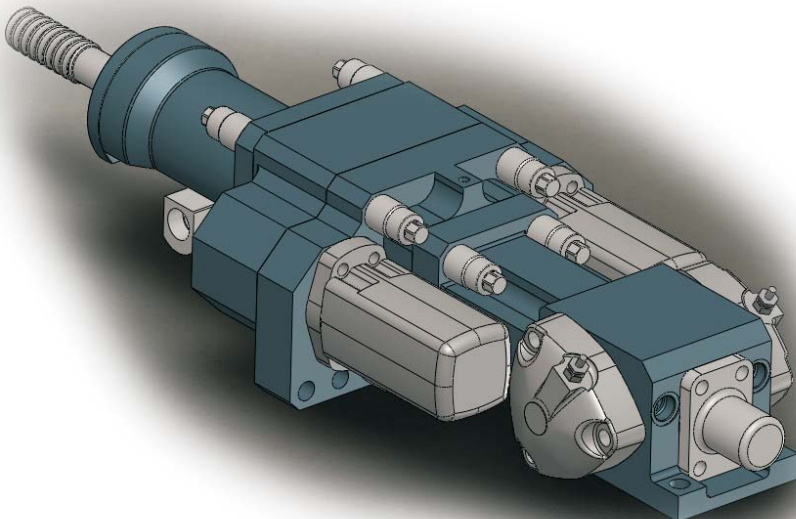
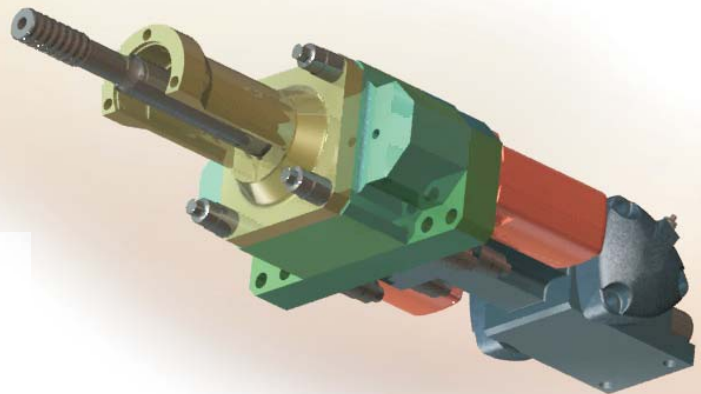
PERCUSSION OUTPUT POWER: 15.5 kW

MAX. ROTATION TORQUE: 3000 Nm

SHANK LUBRICATION: GREASE

FLUSHING: AIR / WATER / GROUT

WEIGHT: 200 kg



TRAXXON.COM
1-800-877-7757