

Hydraulic mobile drilling unit, suitable for vertical and horizontal on any inclined, totally independent, allowing an increase production and working quality, guarantee energy conservation and an higher working safety.

Hydraulic unit can rotate +/- 90° vertically, a +/- 180° vertical and horizontal inclination and it can have a 0,30 Mts. extension from the ground support without moving the boom. The holes produced are vertically lined up by an indicator angle settled on the unit base and they can have a diameter between 22 to 45 mm. by the use of Integral drill steels - 22 mm. (7/8").

Our module, constituted by oil filters, the heat exchanger and hydraulic compressor, is mounted on the back part of the self-moving in order to limit the encumbrance.

Operator safety, as the environment protection, is guaranteed by the presence of a hydraulic suction system of the emitted dusts that are poured and collected in suitable plastic bag.

Hydraulic drifters present acoustics emission values very low and this factor, allowed by technological innovations that constantly give improvements, has characterized our drifters, among the drilling equipment circulating up today with the lower noise emission.

Finally the presence of a remote control panel allows to the operator in the quarry to work and check the machine at the proper distance guaranteeing an higher working safety, a minor exposition to the dangers, the accidents and the acoustic pollution.

## **Drilling unit:**

- 4 Mts. translation track
- Four independent hydraulic stabilizer legs
- One independent column equipped with an approaching device to the ground +/- 0,30 m
- One chain feed slide for drifter
- Sliding block and truck made in self-lubricating composite material
- Fast system steel retainer
- Anti jamming device
- Hydraulic device for inclinations regulator
- Cable or Radio remote control panel
- Water or air drain drilling
- Vertical rotation +/- 90°
- Horizontal track inclination +/- 25°
- Vertical track inclination +/- 180°
- Track translation for alignment 0,30 m

## **Self moving Unit:**

- Telescopic boom shift up to 5-5,5 m
- Drilling coverage area
- Base inclination +40° / -25°
- Lateral translation +/- 190 mm
- Vertical straddle 7-7,5 m
- Drilling coverage area 258 m<sup>2</sup>
- Four wheels driver
- Hydrostatic drive
- Three mode steering
- Heat exchanger supplementary air and oil
- Safety system

## **Engine:**

- Perkins Mod. "1004 -40 "
- Direct injection, turbo
- Cylinders 4
- Power 85 Hp

## **Dust collectors:**

- Mod. "Bermuda Chiocciola 500"
- Filtering surface 8 m<sup>2</sup>
- Suction capacity 500 m<sup>3</sup>/H
- Automatic cleaning system of the filters
- Number of filters 4

**Drifters:**

- *Doofor DF420:*

<input type="checkbox"/>	Weight Kg	41
<input type="checkbox"/>	Working pressure Bar	110/140
<input type="checkbox"/>	Percussion rate	6500/7000
<input type="checkbox"/>	Lit./Min rotation	11/20
<input type="checkbox"/>	Lit/Min percussion	40/60
<input type="checkbox"/>	Rotation speed torque Nm	97

- *Doofor DF522:*

<input type="checkbox"/>	Weight Kg	55
<input type="checkbox"/>	Working pressure Bar	100/130
<input type="checkbox"/>	Percussion rate	2700/4200
<input type="checkbox"/>	Lit./Min rotation	9/18.5
<input type="checkbox"/>	Lit/Min percussion	46/80
<input type="checkbox"/>	Rotation speed torque Nm	107

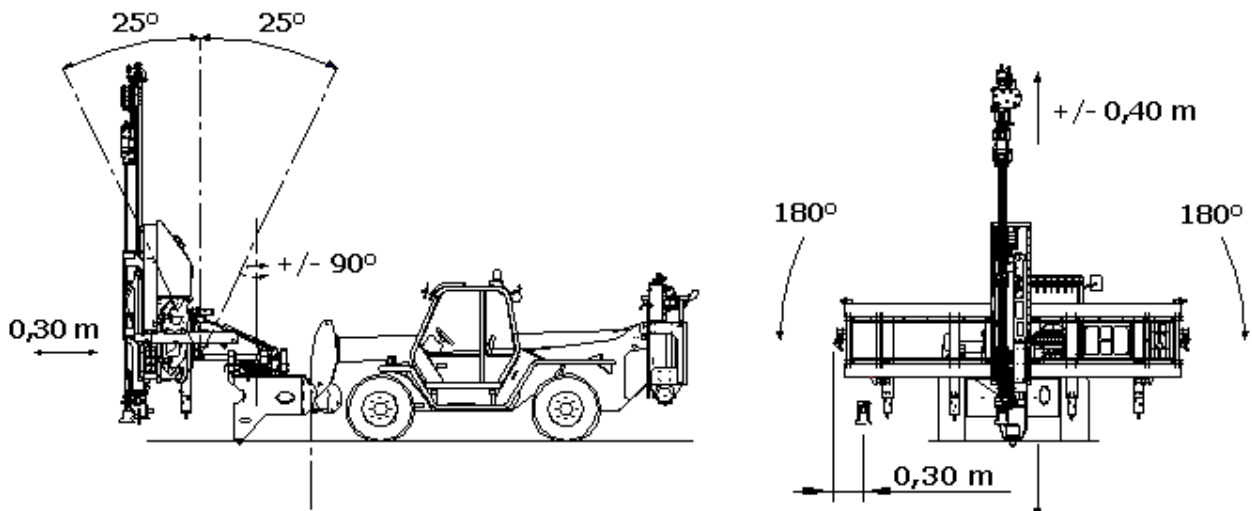
**Compressor for drilling drain and lubricating:**

- Mod. "R 133 DM"
- Air volume 1,4 m<sup>3</sup>/min.

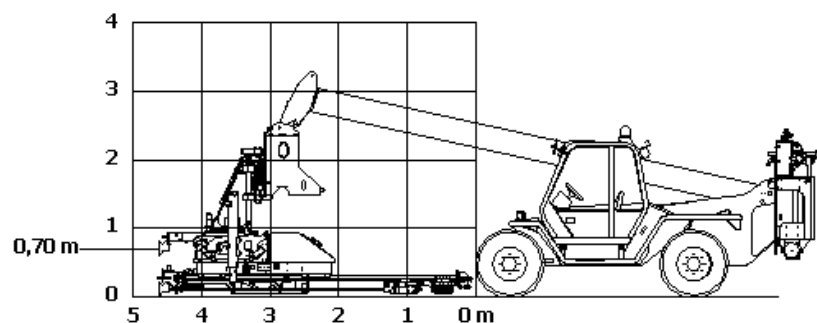
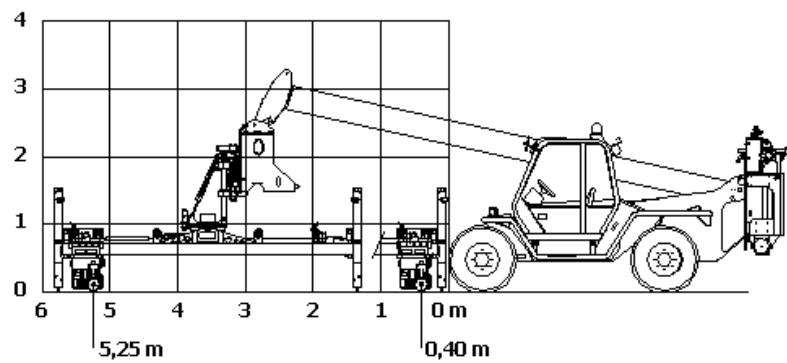
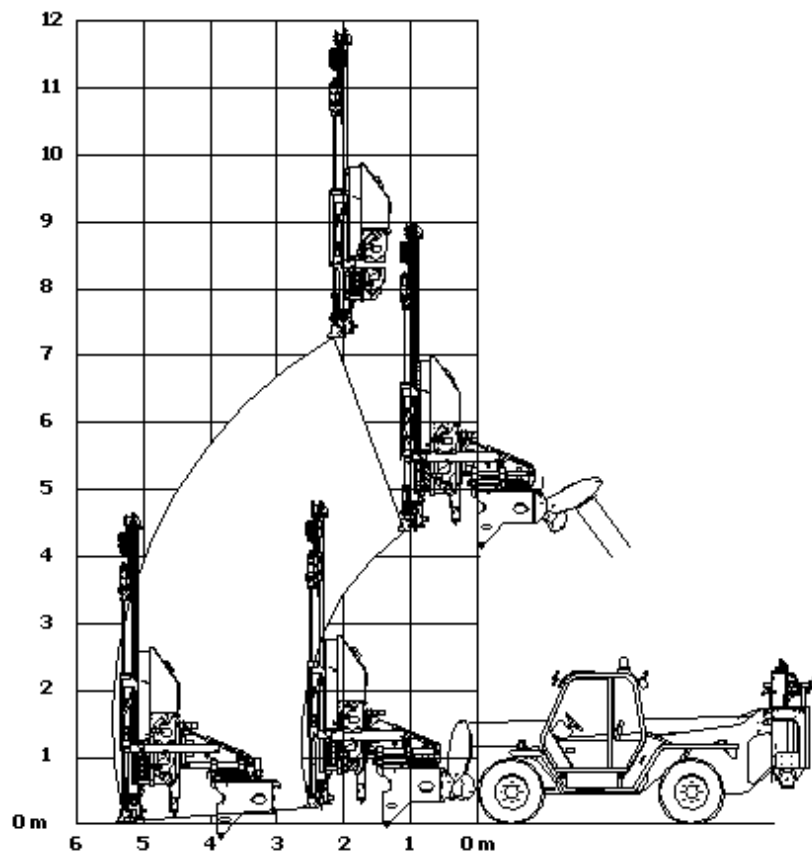
**Technical specifications:**

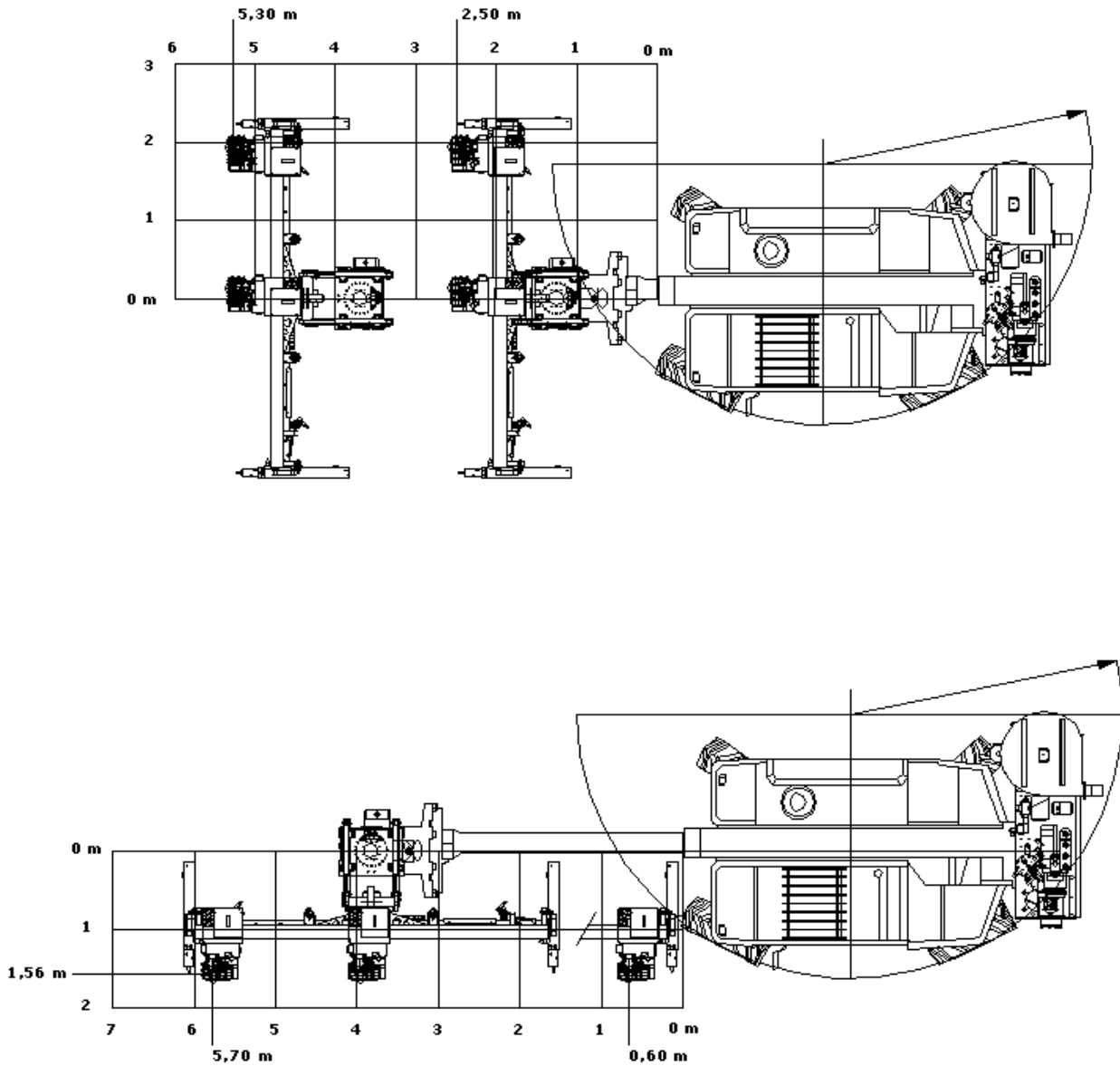
- Start drilling with 3,20 Mts. Integral Drill Steel
- Holes diameter 22-45 mm
- 4 Mts. translation track with 3,30 Mts. working translation

**Drilling unit movements:**



**Drilling geometry:**





## Indicative performances:

- *Drilling speed with button bit (diameter 32):*
  - Granite tipo Porriño: from 1,4 to 1,8 m/min.
  - "Gneiss" Luserna: from 1,3 to 1,6 m/min.
  - Limestone "Trani": from 1.5 to 1.9 m/min.
  - Marble "Botticino": from 1,5 to 1,9 m/min.
  
- *Production:*
  - Granite Porriño:
    - Blocks squaring: from 250 to 300 m
    - Whole block: from 300 to 350 m
  
  - Limestone "Trani":
    - Blocks squaring: from 300 to 350 m
    - Whole block: from 350 to 380 m
  
  - Marble "Botticino":
    - Blocks squaring: from 250 to 300 m
    - Whole block: from 300 to 350 m

## Average consumption:

- 5÷6 l/hour

## Freight dimensions:

- Total length: 9,40 m
- Total width: 2,40 m
- Height: 3,05 m
- Weight: 11.700 kg

